

Lucernario aerante[®] INOX 3.0

For lightwells



4
VENTILATING
SIDES



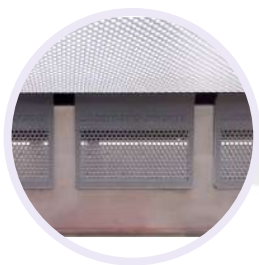
3
VENTILATING
SIDES



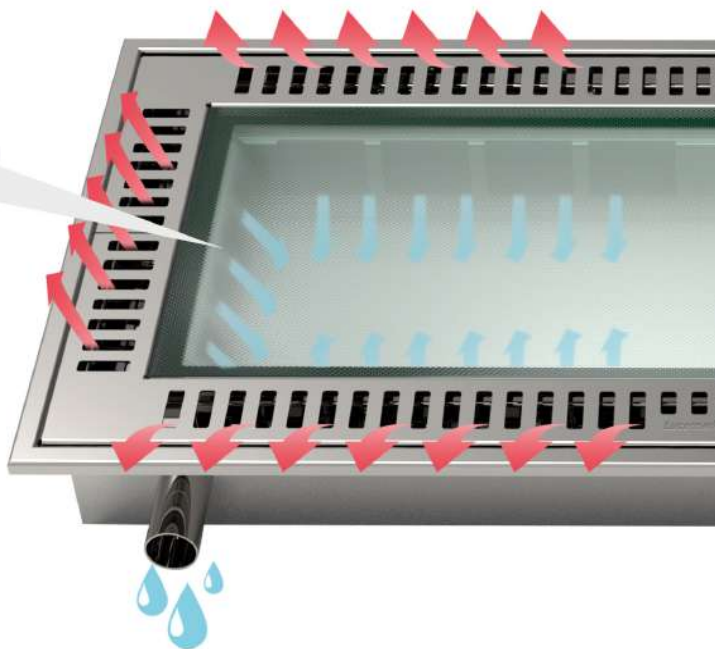
Security
class
RC2



Glass
load-bearing
capacity
600Kg



*ABS Plastic Air Vents
with Insect Screen*



Lucernario Aerante Inox 3.0 for areaways and light wells, a standard product range available for immediate delivery, for new construction or renovation of residential buildings and pavements. Lucernario Aerante Inox 3.0 ensures wide natural light and air exchange in underground rooms, while preventing the entry of insects and dirt. The RC2 class triple-layered security glass denies access to intruders. The removable grille, which is lightweight and easy to extract, allows for periodic cleaning of the ventilation channel.

Thanks to all these features, Lucernario Aerante Inox 3.0 allows you to ventilate your underground rooms in complete peace of mind, even in your absence.

Lucernario Aerante Inox 3.0 must be set into the floor of pavements and terraces, waterproofed on the perimeter, and connected to the sewage system drainage pipe (surface water) at ground level, consequently preventing water runoff into the subsoil and thus reducing the risk of Rising Damp in the underground areas.



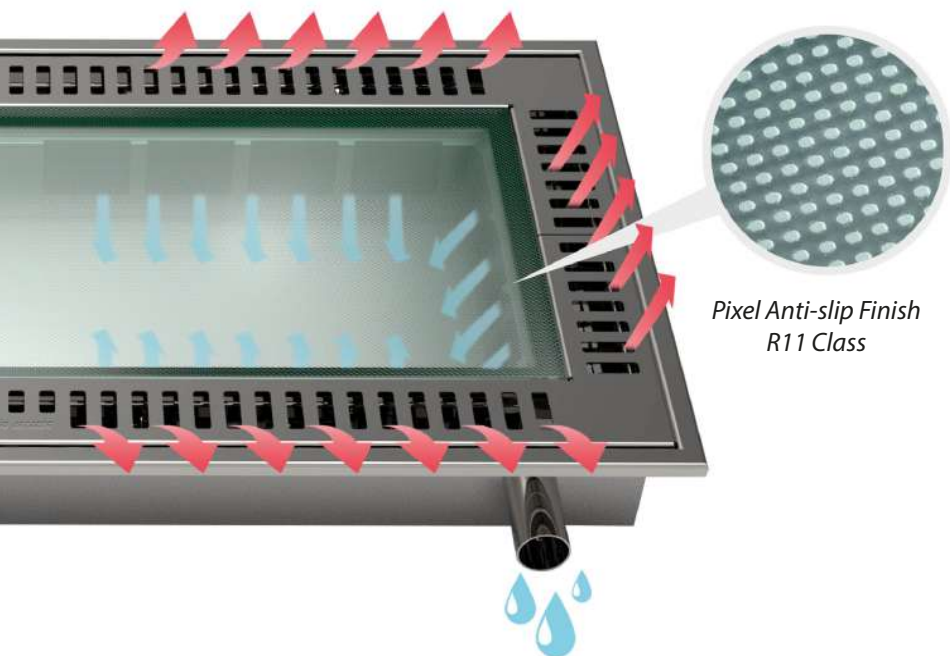
Areaway
Light Well



Fiberglass



Concrete



*Pixel Anti-slip Finish
R11 Class*

Lucernario Aerante Inox 3.0 is made of AISI 304 stainless steel, unpolished, unsatinized, but in its rough finish. The ventilation slots are fitted with micro-perforated insect screens made of ABS plastic. The glass is of the "PIXEL" anti-slip R11 class type. The drainage nozzles measure 50 millimetres in diameter for PP pipes equipped with gaskets.

Lucernario Aerante Inox 3.0 is structured solely as a walkable version; upon request, it can be custom-made, albeit with dimensional limitations.

The "ACQUASTOP" anti-flooding system can be installed on the entire Inox 3.0 range (Standard and Custom-made). This system activates in case of heavy or torrential rain, river overflow, etc.

Should the Lucernario Aerante drainage pipe become blocked, the floats activate by closing the ventilation slots, thereby almost completely blocking the ingress of water into the underlying areas.

Why choosing Lucernario aerante INOX?



Natural Light

The glass features a slight satin finish that allows for better light diffusion in the basement. The anti-slip texture helps protect the glass surface from scratches.



Cleaning

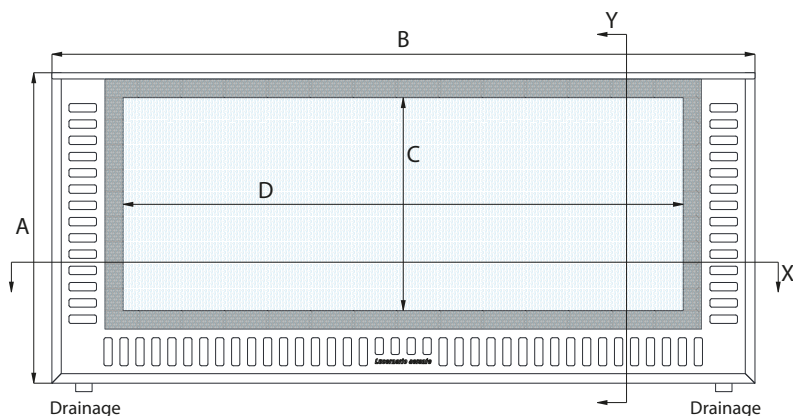
The drainage channel collects dirt and can be inspected and cleaned from the outside. The micro-perforated air vents prevent the passage of insects and debris.



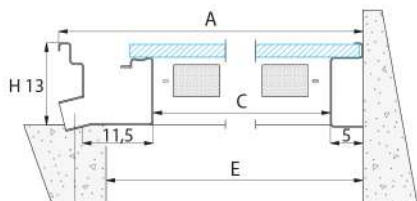
Security

RC2 certified security product. Safer than a traditional grille. Lower risk of intrusions through the basement.

Size Guide

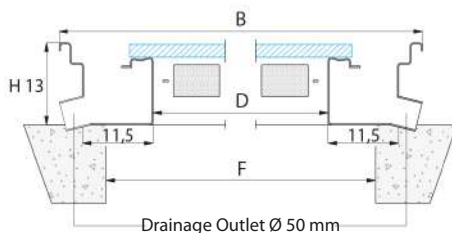


Longitudinal Section (y)



Drainage Outlet Ø 50 mm

Cross Section (x)



Drainage Outlet Ø 50 mm

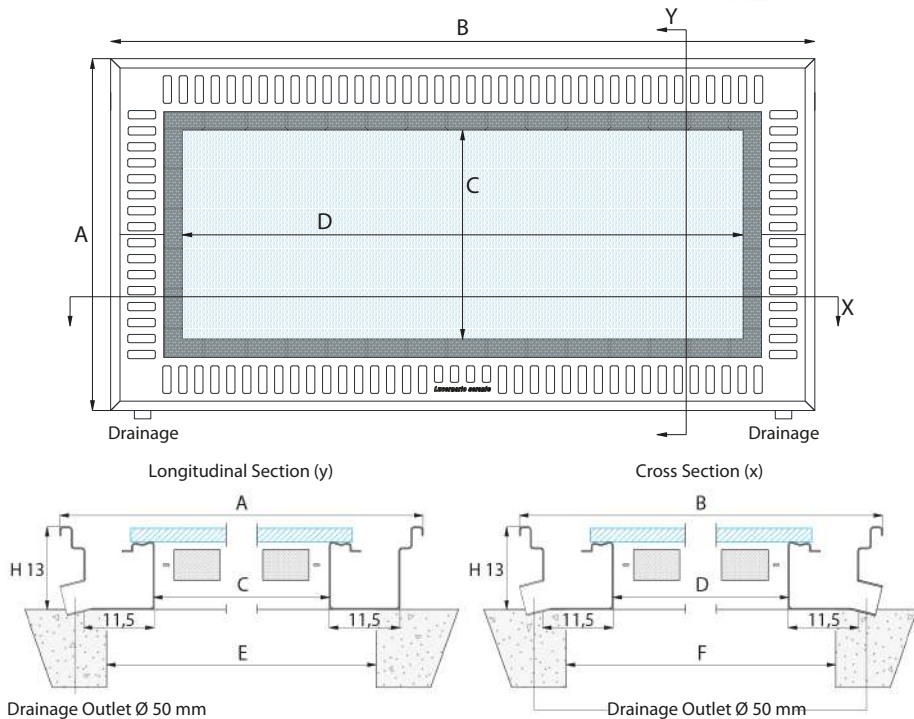
Available dimensions

Model	Dimensions		Light Well Opening			Slab Opening "From-To"		Weight
	A	B	C	D	CxD(m ²)	E	F	
XS55	55	130	34,6	99,6	0,35	35-47	100-114	44
XS85	85	130	64,6	99,6	0,64	65-77	100-114	63
S65	65	150	44,6	119,6	0,53	45-57	120-134	57
S85	85	150	64,6	119,6	0,77	65-77	120-134	73
M65	65	170	44,6	139,6	0,62	45-57	140-154	64
L65	65	190	44,6	159,6	0,71	45-57	160-174	71

Unless otherwise specified, all measurements are in centimetres.

Consult the Technical Data Sheet on the website inox.lucernarioaerante.it before purchasing the product.

Size Guide



Available dimensions

	Dimensions		Light Well Opening			Slab Opening "From-To"		Weight
Model	A	B	C	D	CxD(m ²)	E	F	Kg
XS66	66	130	35,6	99,6	0,35	36-49	100-114	50
XS96	96	130	65,6	99,6	0,65	66-79	100-114	70
S76	76	150	45,6	119,6	0,54	46-59	120-134	64
S96	96	150	65,6	119,6	0,78	66-79	120-134	80
M76	76	170	45,6	139,6	0,64	46-59	140-154	72
L76	76	190	45,6	159,6	0,73	46-59	160-174	80

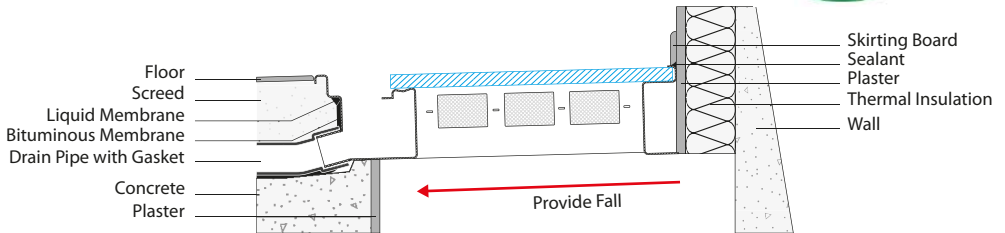
Unless otherwise specified, all measurements are in centimetres.

Consult the Technical Data Sheet on the website inox.lucernarioaerante.it/en before purchasing the product.

Laying Scheme

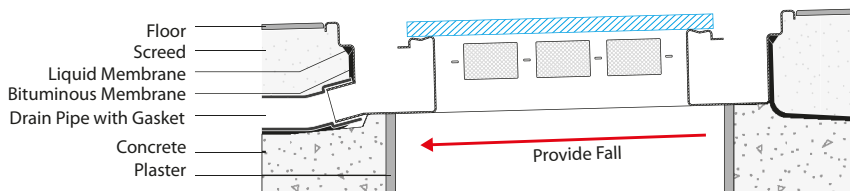
Installation Diagram Adjacent to a Wall

3
VENTILATING
SIDES



Installation Diagram away from the wall

4
VENTILATING
SIDES



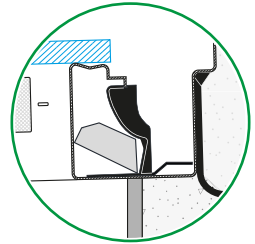
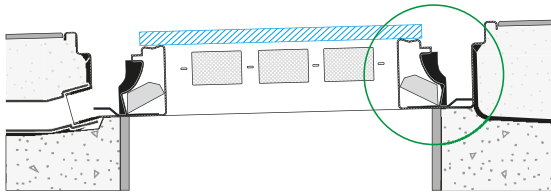
These installation diagrams are provided for illustrative purposes only.
Consult a professional to determine the ideal realization of your flooring.

Acquastop

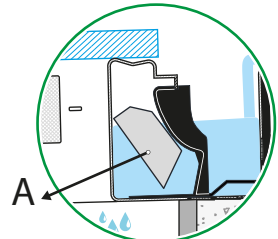
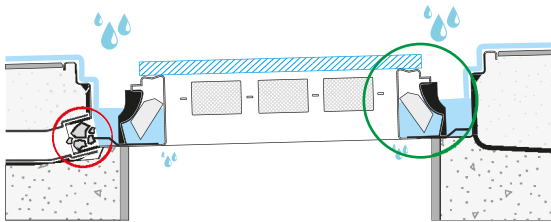
Anti-flooding system



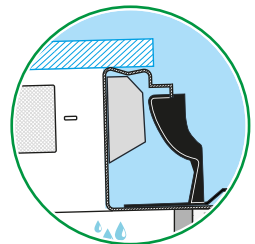
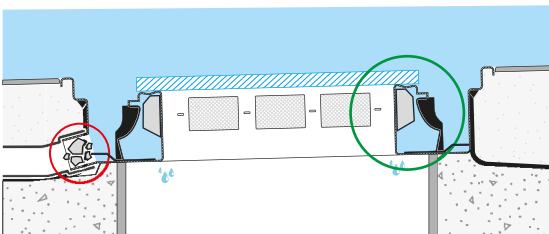
- Normal Operation Status: Drain functioning, float at rest, and unrestricted airflow.



- If the drain becomes blocked, the drainage channel fills with water, and the float (A) rises.



- The float reaches the operating position, closing the air vents and reducing a possible flooding to just a few trickles of water.



Lucernario aerante INOX | WARRANTY EXTENSION



Confirm your purchase by registering your product on the website inox.lucernarioaerante.it/en and obtain the 14-year Gold Warranty.

PRODUCED BY



Via del Boscone, 8 - 25014 Castenedolo (BS), Italy
+39 030 2731985 - info@bottegadelferro.net

DISCOVER THE ENTIRE RANGE ON THE WEBSITE

www.lucernarioaerante.it

The product and the brand Lucernario aerante® are the property of Bottega del ferro, Via del Boscone, 8 25014 Castenedolo (BS) Italy