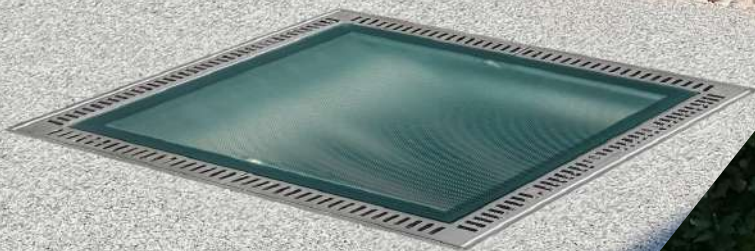


Lucernario aerante[®] INOX

For lightwells

Openable
For swimming pools



- For technical control room
- Easy inspection
- Protects implants



Shower tray

Lucernario aerante INOX
Openable can be used
as shower tray.

The water collected by the drainage channels is conveyed to the drain. The non-slip surface is suitable for contact with water. Adherence and comfort are guaranteed.

Storing tools

Lucernario aerante INOX
Openable can be used to store **objects and tools inside the compartment**, such as brushes, nets, and the **pool cleaning robot**.

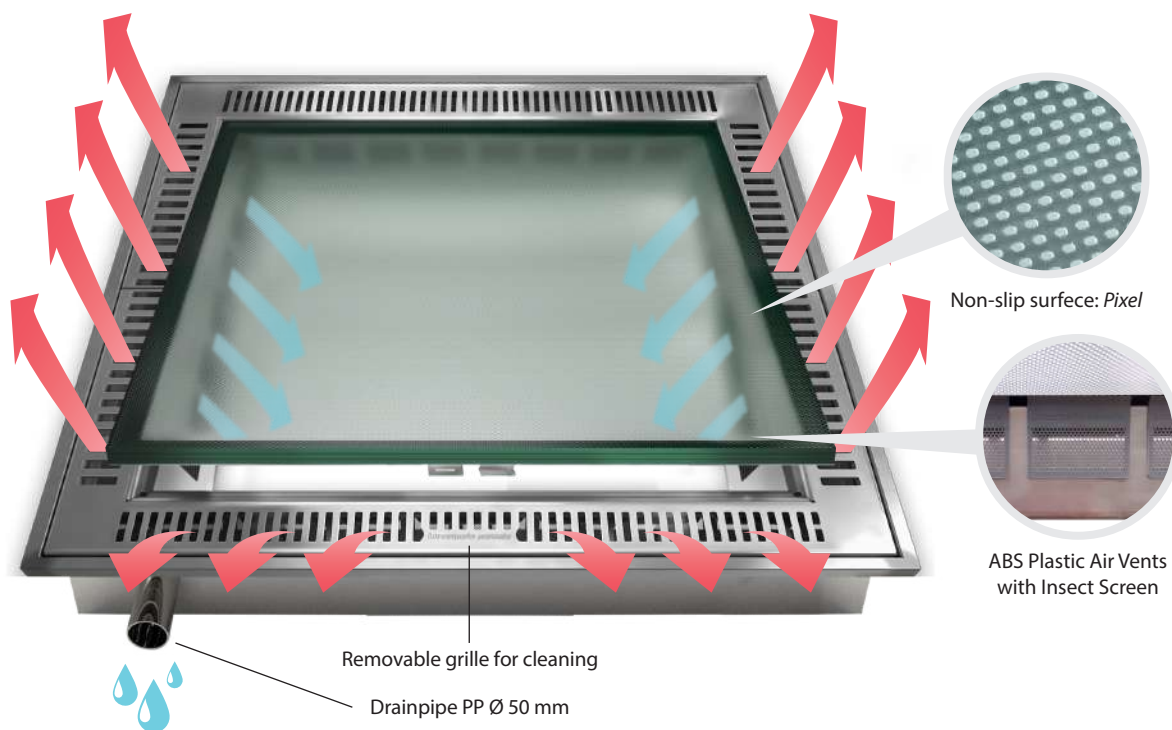
When in use, the robot control unit can be left inside the system compartment.



Tileable

Lucernario aerante INOX
Openable **can be paved** with porcelain stoneware tiles or with resin floors.





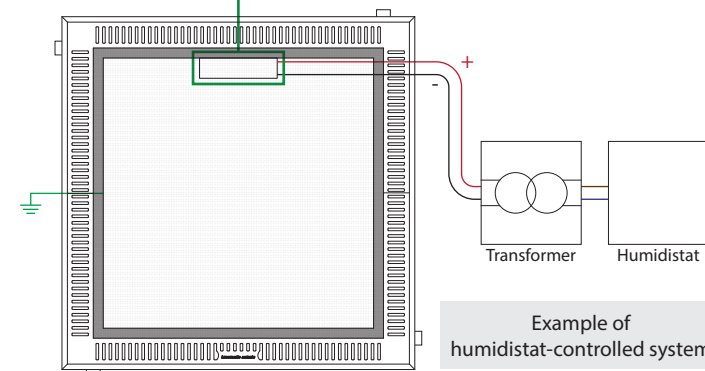
How it works

The openable *Lucernario aerante INOX* collects rainwater from its drainage channel and **allows the ventilation of the technical room** through the air intakes. The constant flow of air and the action of the electric fan ensure the control room breathes better. Humidity is considerably reduced and, consequently, so is the **risk of system usury**. The air intakes are protected by **anti-insect and anti-dirt nets**. Simply lift the grid to clean the runoff channel.

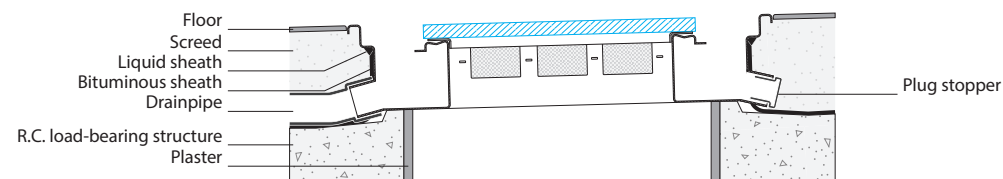
Materials

The openable *Lucernario aerante INOX* is made of **AISI 316** semi-matt steel for a **modern look** and **high resistance to oxidation**. The walk-on glass provides natural light and ensures safe transit thanks to its **R11 non-slip pattern**.

Electric fan type "OUT"
An indispensable accessory
for correct air circulation.

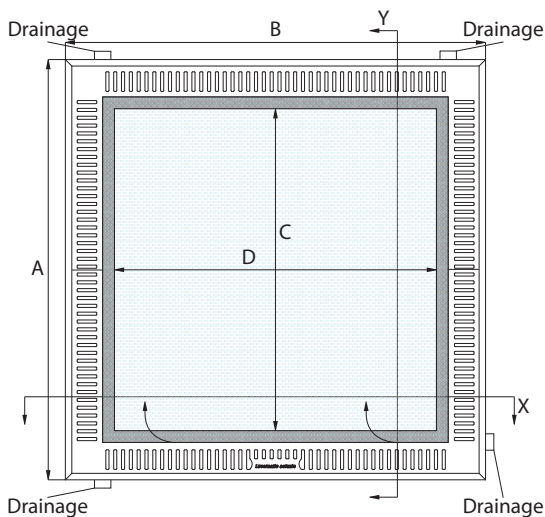


An electric fan type "OUT" is included in the sales price.
This wiring diagram is supplied by way of example.
We suggest contacting a professional to ideally define your system.



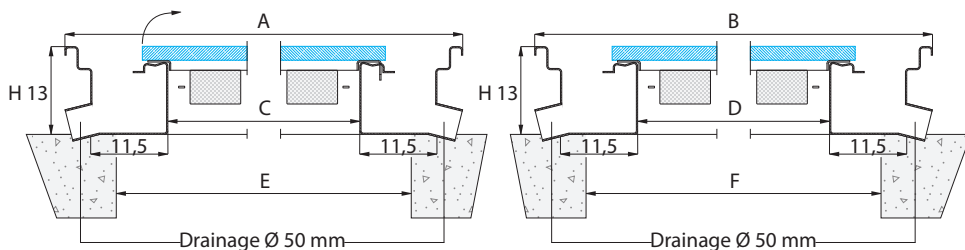
These installation diagram is provided as examples.
We recommend you consult a professional who can define the ideal realisation of your floor.

Size Guide



Longitudinal Section (y)

Cross Section (x)



Available dimensions

	Dimensions	Openable compartment	Insole hole	Weight	Openable surface
Model	A x B	C x D	E x F	Kg	(m ²)
MX-A110	110 x 110	79 x 79	min 80 - max 94	80	0,62
MX-A130	130 x 130	99 x 99	min 100 - max 114	90	0,98
MX-A200	110 x 199	79 x 168	min 80 x 170 max 94 x 184	140	1,33
MX-A240	130 x 239	99 x 208	min 100 x 210 max 114 x 224	180	2,06

Unless otherwise specified, all measurements are in centimetres.

Consult the Technical Data Sheet on the website inox.lucernarioaerante.it/en before purchasing the product.

Lucernario aerante® INOX

WARRANTY PROGRAM



Prove your purchase by registering your product on inox.lucernarioaerante.it and obtain the Gold Warranty lasting 14 years.

PRODUCED BY



Via del Boscone, 8 - 25014 Castenedolo (BS), Italy
+39 030 2731985 - info@bottegadelferro.net

No more same old grilles
inox.lucernarioaerante.it

The product and the *Lucernario aerante®* brand are the property of Bottega del Ferro, Via del Boscone, 8 25014 Castenedolo (BS) Italy