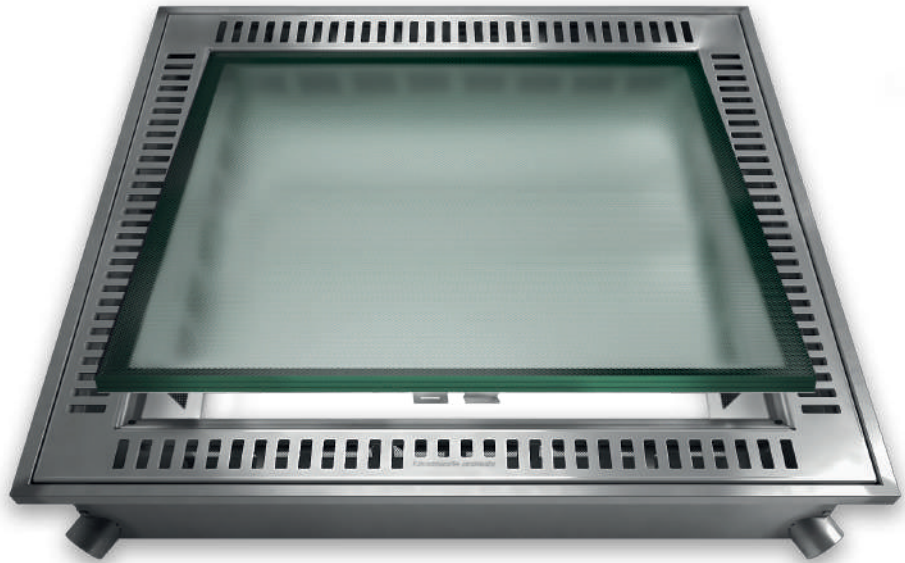


## Technical specifications

*Openable Lucernario aerante INOX in AISI 316 stainless steel for the access to technical rooms in the basement*



## Product description

Lucernario aerante with openable shatterproof laminated glass.  
Perimeter drainage channel with rainwater drains and air intakes for air renewal of underground technical rooms. Anti-insect nets to preserve cleanliness.  
Removable grid for the drainage channel cleaning.

## Materials

AISI 316 stainless steel and tempered laminated glass.

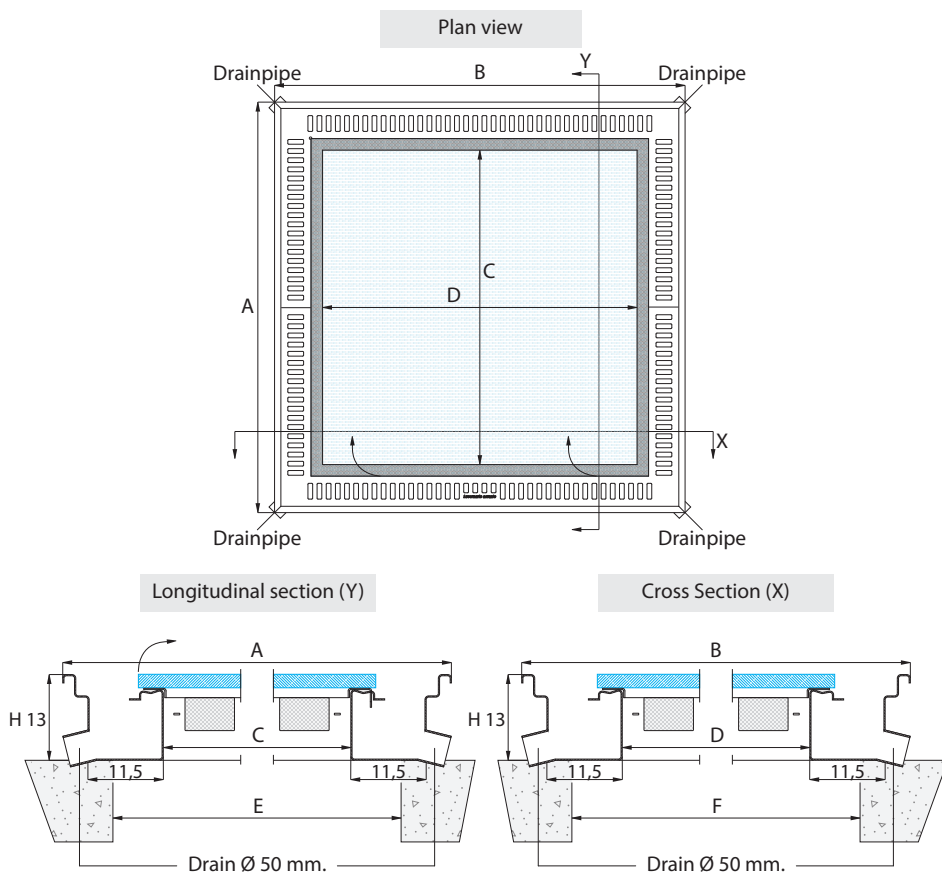
## Contents Technical sheet

Page 1 - Product overview  
Page 2 - Dimensional specifications  
Page 4 - Technical performance  
Page 5 - Other models

Page 6 - Pool filters compatibility  
Page 7 - Tileable  
Page 8 - Further notes

## Technical specifications

### Product technical detail



### Available dimensions

	Dimensions	Openable compartment	Insole hole	Weight	Air intakes surface*	Openable surface
Model	A x B	C x D	E x F	Kg	(cm <sup>2</sup> )	(m <sup>2</sup> )
MX-A110	110 x 110	79,6 x 79,6	min 80 - max 94	80	978	0,63
MX-A130	130 x 130	99,6 x 99,6	min 100 - max 114	90	1257	0,99

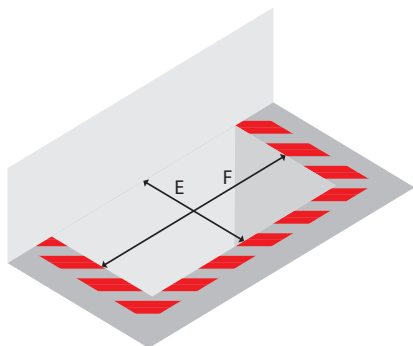
Where not specified, measurements are in centimetres.

\*The surfaces do not take into account the anti-insect mesh fitted behind the air intakes, the empty part of which is equivalent to 46,3% of the whole.

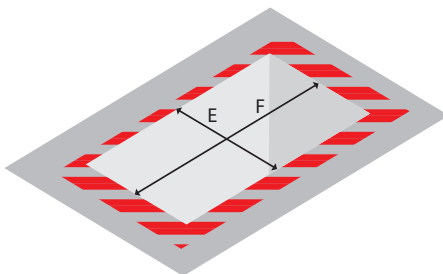
## Technical specifications


### Supporting base

Lightwell by the wall



Lightwell away from wall



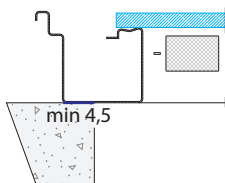
 = skylight support



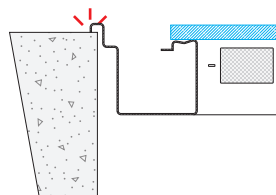
The load-bearing capacity of the *Lucernario aerante INOX* has been tested with a support base of three adjacent sides (figures 1 and 2), but resting on two opposite sides (figures 3 and 4) is also allowed.

### Supporting base

YES



NO



The Skylight must rest on the reinforced concrete over at least 4.5 cm.  
Any other method of support is forbidden.

## Technical specifications

### Composition of glazing

Upper glass	8 mm non-slip with circle pattern, tempered
Central glass	5 mm clear float, tempered
Lower glass	5 mm clear float, tempered

### Non-slip performance

Non-slip performance certified with BCRA-Tortus method	$\mu > 0,40$
Non-slip performance certified with pendulum method according to BS 7976-2:2002 standard	value > 35
Non-slip performance certified according to DIN 51130:2014	classification R11
Non-slip performance certified according to DIN 51097:1992	classification B
Non-slip performance certified with BOT 3000 method according to ANSI A137-1:2012 standard	DCOF > 0,42
Resistance to surface abrasion according to UNI EN ISO 10545-7:2000 standard	PEI III

Data supplied by the manufacturer

### Performance Summary

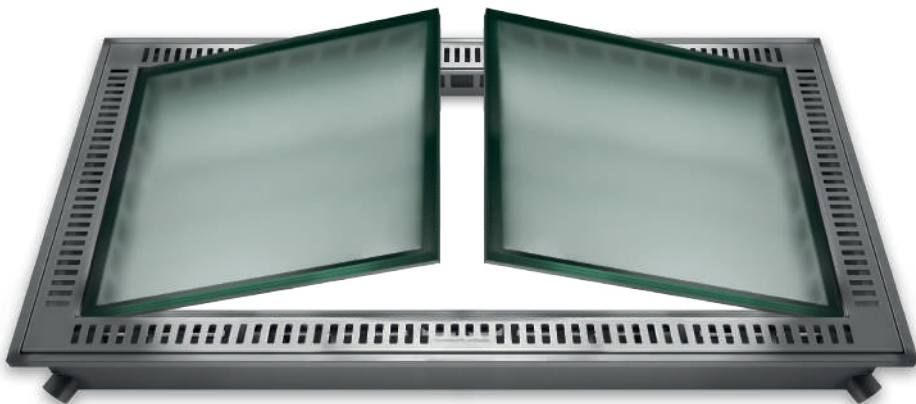
Openable	Yes
Burglar-proof class	NPD
Walkability class	walkable: Max 600 kg
Thermal insulation	NPD
Acoustic insulation	NPD

NPD : No performance determined

## Technical specifications

Other models

Double-wing



Available dimensions

	Dimensions	Openable compartment	Insole hole	Weight	Air intakes surface*	Openable surface
Model	A x B	C x D	E x F	Kg	(cm <sup>2</sup> )	(m <sup>2</sup> )
MX-A200	110 x 199	79,6 x 168,6	min 80 x 170 max 94 x 184	140	1565	1,34

Where not specified, measurements are in centimetres.

\*The surfaces do not take into account the anti-insect mesh fitted behind the air intakes, the empty part of which is equivalent to 46,3% of the whole.

## Technical specifications

Pool filters compatible according to flow rate or size

Filter flow rate	 MX-A110	 MX-A130	 MX-A200
10 m <sup>3</sup> /h	✓	✓	✓
12 m <sup>3</sup> /h	✓	✓	✓
16 m <sup>3</sup> /h	✓	✓	✓
21 m <sup>3</sup> /h	✓	✓	✓
24 m <sup>3</sup> /h		✓	✓
30 m <sup>3</sup> /h		✓	✓
32,5 m <sup>3</sup> /h		✓	✓
Maximum size*	79 x 79	99 x 99	79 x 168

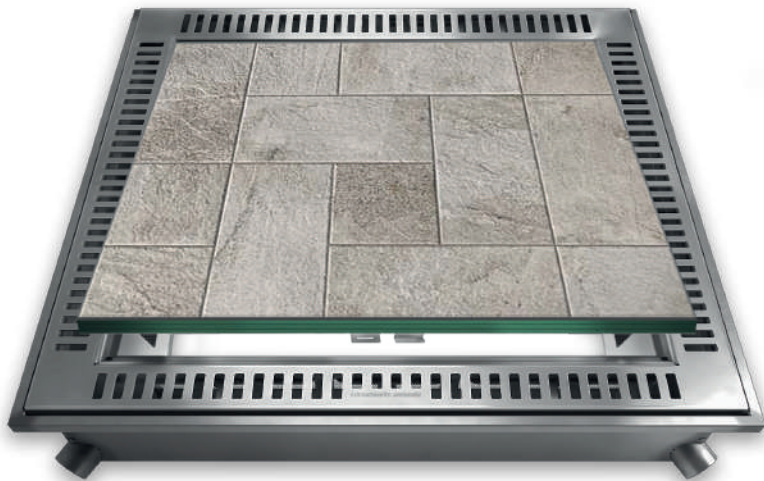
Where not specified, measurements are in centimetres.

\*Always check the size of the pool filter, regardless of the flow rate, before purchasing the product. In some cases, it may be necessary to release the shock absorbers of the openable Lucernario aerante INOX to allow the filter to pass through.

NOTICE: The Electric extractor fan type OUT can prevent the pool filter from passing through. Install the device after lowering the filter inside the system room.

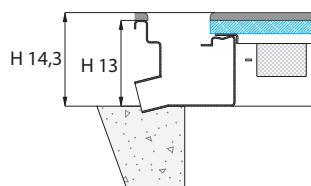
## Technical specifications

Tileable



From today, *Lucernario aerante INOX Openable* is tileable.  
The maximum height allowed for the tile is 13 mm (tile and glue included).

Laying height



### 1. Further notes

Check the suitability of the product for the building under construction before purchasing and installing it.

Read the *installation instructions* carefully before installing the product.

Read the *User Manual* carefully before using or servicing the product.

In the event of a claim, read the *Warranty* carefully and then contact customer service.

The *installation instructions*, the *User Manual* and the *Warranty* are documents that can be found inside the purchased product or on the [inox.lucernarioerante.it](http://inox.lucernarioerante.it) website.

### 2. Discouraged and prohibited uses

We do not recommend installing the *Lucernario aerante INOX Openable* to cover heated and inhabited environments, as this would result in heat dispersion.

We do not recommend placing permeable objects, i.e. objects that can be attacked by water and humidity, underneath the *Lucernario aerante INOX Openable*.

Placing fresh food under the *Lucernario aerante INOX Openable* is forbidden.

The *Lucernario aerante INOX Openable* is not suitable for the transit of vehicles, even at walking pace.

### 3. Condensation and other moisture problems

Condensation occurs when warm, moist air collides with a cold surface (e.g. the glass or frame of the *Lucernario aerante INOX Openable*). When this air cools down, the amount of water contained in it deposits as condensation. The formation of condensation is therefore a natural process which has nothing to do with the quality of the product.

The causes of excessive humidity can be:

- Cooking, showering, drying clothes hanging up or in a dryer, using the washing machine.
- Sweating and breathing of people.
- Presence of indoor plants.
- Insufficient air circulation.
- Presence of water wells, open manholes.
- Poor or lack of waterproofing of retaining walls or basement window.
- Water leaks.

Condensation cannot cause any damage to the *Lucernario aerante INOX*.

### 4. Advice on preventing condensation

In the design and construction phase:

- Connect the drain of *Lucernario aerante INOX Openable* to an external drain line, preferably to a leaky pit to be buried in the garden as far as possible from the basement walls.
- Waterproof the outside of the retaining walls and the external walls of the cavity with a bituminous sheath (basement window well or shaft).
- In the presence of a ventilated crawl space below the flooring of the rooms in the basement, make sure that the venting does not take place inside the basement window wells or shafts covered by the *Lucernario aerante INOX Openable*.
- Prefer the use of lightwells with closed bottom
- Install thermal insulation panels to cover the inside of the cavity (basement window well or shaft).
- Install fans to force air or controlled mechanical ventilation.

During use:

- Remove possible sources of moisture.
- Open the *Lucernario aerante INOX Openable*.



Thank you for purchasing *Lucernario aerante INOX*.

The product and the brand *Lucernario aerante*® are the property of Bottega del Ferro.  
Bottega del Ferro reserves the right to change the characteristics of the products shown without notice.  
This document and all other documents related to the *Lucernario aerante INOX* products can be found on the website [inox.lucernarioaerante.it](http://inox.lucernarioaerante.it).



Bottega del ferro  
Via del Boscone, 8  
25014 Castenedolo (BS) Italia  
T. +39 030 2731985  
F. +39 030 2130930  
[info@bottegadelferro.net](mailto:info@bottegadelferro.net)  
[www.bottegadelferro.net](http://www.bottegadelferro.net)  
[inox.lucernarioaerante.it](http://inox.lucernarioaerante.it)